

Creating Safe Sporting Environments

Risk Assessment

Identify environmental risks and highlight current gaps that need to be addressed through mitigation strategies

Implement appropriate organisational policies on:

- 1-on-1 interaction with children and young persons
- digital communications
- changing room
- gift-giving
- intimate relationships

Recruit the right people. Ask the right questions in:

- suitability screening
- background references on working with children and young persons
- declarations on criminal or disciplinary history



Risk Assessment

Identify environmental risks and highlight current gaps that need to be addressed through mitigation strategies

Ensure staff and persons who have a duty of care:

- understand what Safe Sport is / be Safe Sport trained
- are trained on your organisation's policies and practices
- are equipped to respond to reports of concern

Signpost channels for expressing concerns by:

- providing assurance of confidentiality
- having clear protocols and guidelines for triaging and escalation



Support for Sporting Organizations

Contact us so we can assess how best to support you and your organization in creating a safer sporting environment

Case Management

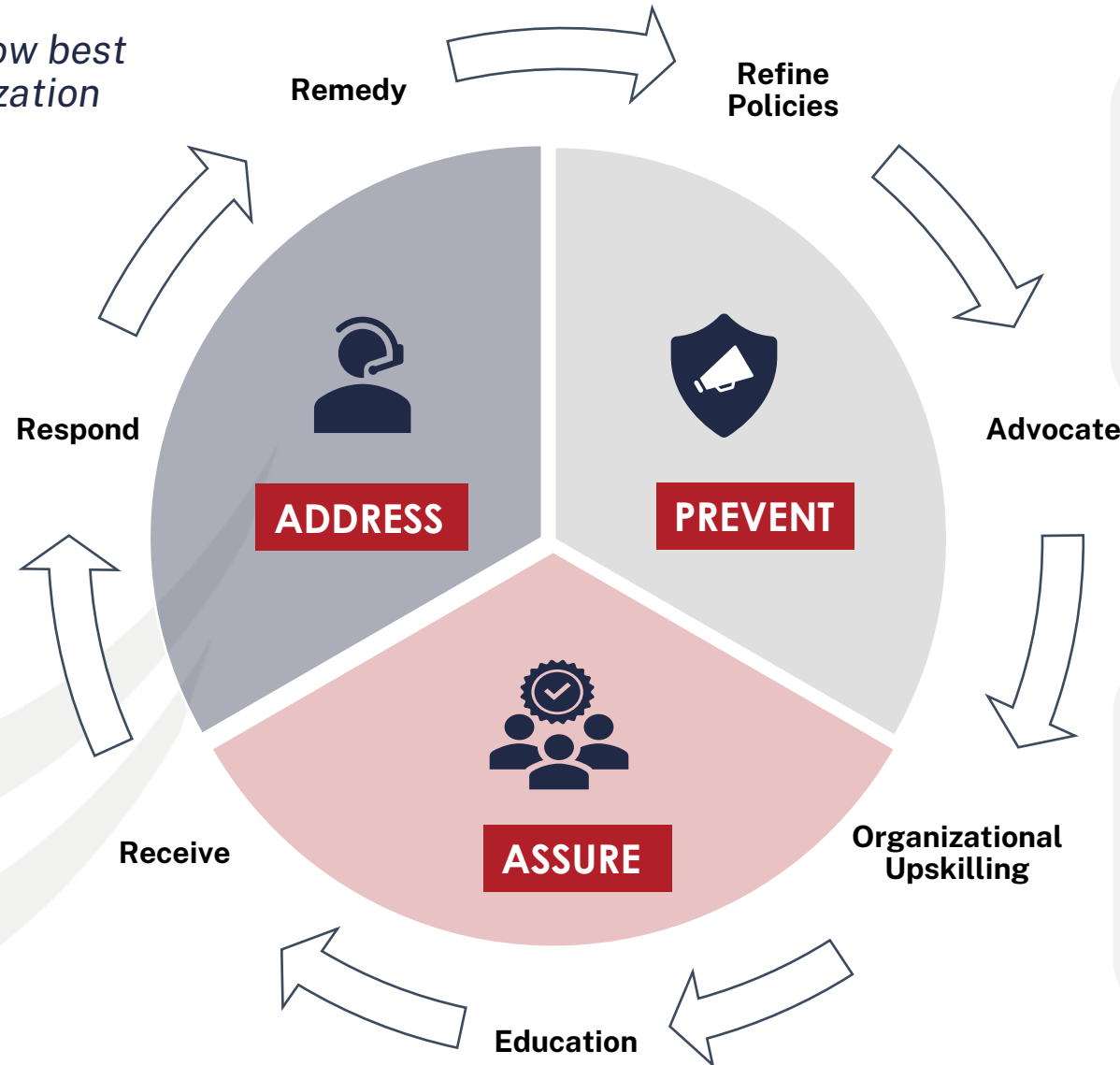
- Case Reporting Templates
- Safeguarding Officer Training

Policy & Advocacy

- Risk Assessment Tools
- Policy templates

Training & Education

- Online Awareness Modules
- Customised Workshops





SAFE SPORT
COMMISSION SINGAPORE

For more information on

- Policies
- Support Networks
- Training & Education
- Reporting Processes



www.safesport.sg

contact@safesport.sg



KEEP IN TOUCH

Get the Safe Sport Commission
[NEWSLETTER](#)